

Cobblestone Glazes



[Product Features](#)

[Application Recommendations](#)

[Usage Variations & FAQs](#)



Print

Cobblestone Glazes Available in Black or White

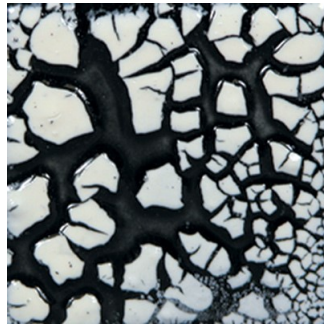
Cobblestones create a textured “cobbled” surface when fired. Apply over another glaze and during the firing process, a shattered pattern of raised, irregular chips will emerge. The underlying glaze will appear in the cracks. To create colored Cobblestones, brush Stroke & Coat® glaze of choice over the white Cobblestone and fire.

Cobblestones Palette

Certified AP on-Toxic and Food safe; however not recommended for food surfaces due to surface characteristics.



SG-201 Black Cobblestone



SG-202 White Cobblestone

Product Features



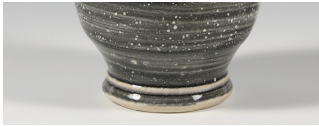
Add color with Stroke & Coat®

Apply 1 coat of Stroke & Coat® over Cobblestone glaze for colorful textural effects.



Cone 6

Cobblestones may also be fired to cone 6 to add a unique look to mid-range fire designs.



Animal Skin Texture

Great for replicating skin patterns and textures of reptiles and spotted animals..

Application Recommendations

The following application recommendations are based upon the original product development intent and use for the product. Information on alternative application methods is listed in the section "Usage Variations and FAQ's". To achieve the cracked pattern (pictured above: Apply Cobblestones over any non-toxic glaze. While Cobblestones can be applied over a previously fired glaze the cracked pattern will become more pronounced if applied on an unfired glaze.

- Shake for 5-6 seconds before use.
- Dispense glaze onto a palette (tile, plate, etc.) and apply 2 coats with a broad, soft brush, such as a CB-604 #4 Soft Fan Brush.
- Apply the second coat while the first coat is still damp: do not allow Cobblestone to dry between coats.
- Pattern break-up is determined by the application direction of the brush stroke. Large break up heavier application, small breakup lighter application.
- If application is too light the cobblestone will not break up. Reapplying and touching up will not achieve a break up.
- Fire to shelf cone 06 or higher.

Usage Variations & FAQs

Q: What conditions can influence the performance of Cobblestones?

A: Application thickness, drying time before firing, firing atmosphere and temperature can all affect the fired results you obtain.

Q: Any tips for handling ware with unfired, dried Cobblestones on it?

A: Handle the ware carefully as the dried Cobblestone has a tendency to flake off. Pieces of cobblestone that fall off may be reapplied to the ware using AC-302 Wax Resist. If cobblestone flakes off and you reapply cobblestone in that area this area will have a different break up pattern. A protective coating of AC-302 Wax Resist can be applied over the cobblestone while the cobblestone is still damp to help alleviate the flaking of the product.

Q: How can I tint Cobblestones?

A: SG-202 White Cobblestone can be tinted with One Stroke or Stroke & Coat. Darker pigment colors work best. Always do a test firing. Too much Stroke & Coat color added will lessen the break up pattern. SG-202 White Cobblestone can be made into various colors by applying 1 coat of Stroke and Coat on top of the damp cobblestone. (heavy application of S&C can interfere with the break up).

Q: Are there any application situations I should avoid?

A: SG-201 Black Cobblestone will not break up over Matte glazes. If Black Cobblestone is desired on Mattes use SG-202 and apply 1 coat of SC-15 to achieve this effect.

Label

A unique textural glaze which forms a raised rectangular chip-like surface. Amount of product application will influence final design. Stir Well. Brush of sponge over any glaze. Handle carefully as dried glaze has tendency to flake. Fire to shelf cone 06 (999° C). NOTE: Firing temperature, length of fire and number of coats will produce color and surface variations. Do not spray apply without proper personal protective equipment. CONE 6 RESULTS: Turns Glossy

The label for Mayco Cobblestone glaze features a central orange-to-white gradient background. At the top center is the Mayco logo, which consists of a stylized black 'M' with red flames on either side. Below the logo, the word 'Cobblestone' is printed in a large, bold, black sans-serif font. To the right of the main text area, there is a vertical column of information. It starts with a circular 'CERTIFIED NON-TOXIC' logo, followed by the text 'No Tóxico', 'Made in U.S.A.', and 'Hecho en EE.UU.'. Below this is the contact information for Mayco Colors, including U.S. and EU addresses and phone numbers, and the website 'www.maycocolors.com'. A recycling symbol is also present next to the non-toxic logo.

Contents/Contenido :

Label Directions

A unique textural glaze which forms a raised rectangular chip-like surface. Amount of product application will influence final design. Stir Well. Brush of sponge over any glaze. Handle carefully as dried glaze has tendency to flake. Fire to shelf cone 06 (999° C). NOTE: Firing temperature, length of fire and number of coats will produce color and surface variations. Do not spray apply without proper personal protective equipment. CONE 6 RESULTS: Turns Glossy